

Rossetti House, Erasmus Street SW1P



A large one bedroom ground floor apartment located within an attractive red brick arts and craft mansion block on the Millbank Estate. The property is presented in fair order throughout but could benefit from a degree of modernisation. The accommodation comprises entrance hall with storage cupboard and doors leading to; reception room, separate kitchen, bedroom and bathroom. Rossetti House is located on Erasmus Street, moments from the Tate Britain, the landscaped Millbank Gardens and the River Thames. The rail links of Pimlico, Victoria and St James' Park are all within easy reach and the surrounding area offers a variety of retail stores, including the flagship House of Fraser department store and the Cardinal Place Shopping Centre.

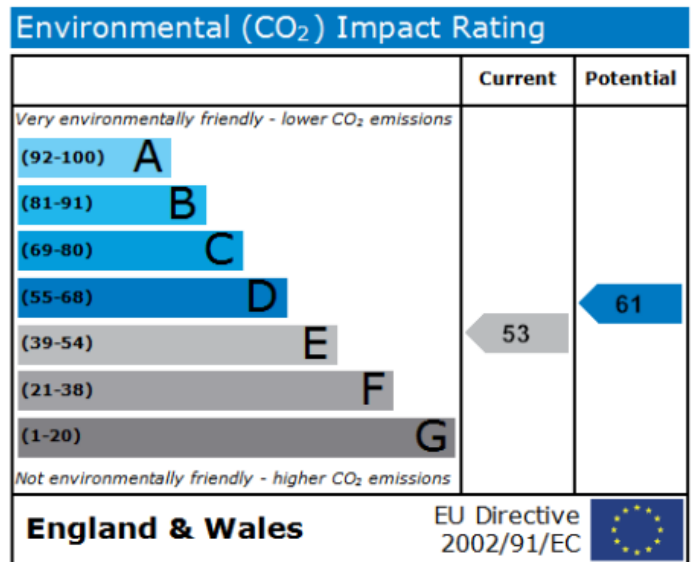
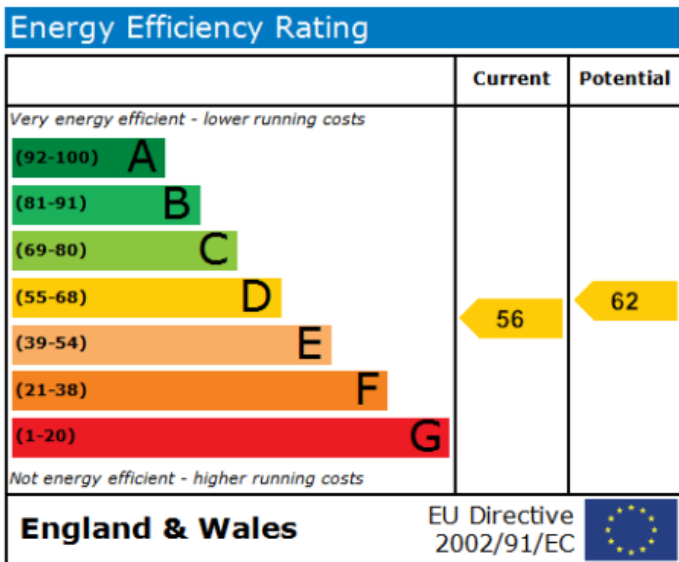
£335,000

Leasehold

40 Great Smith Street t: 0207 222 5510
London f: 0207 222 4780
SW1P 3BU e: info@tuckermanresidential.co.uk



Reception Room



Service Charge: £450 Per Annum Approx

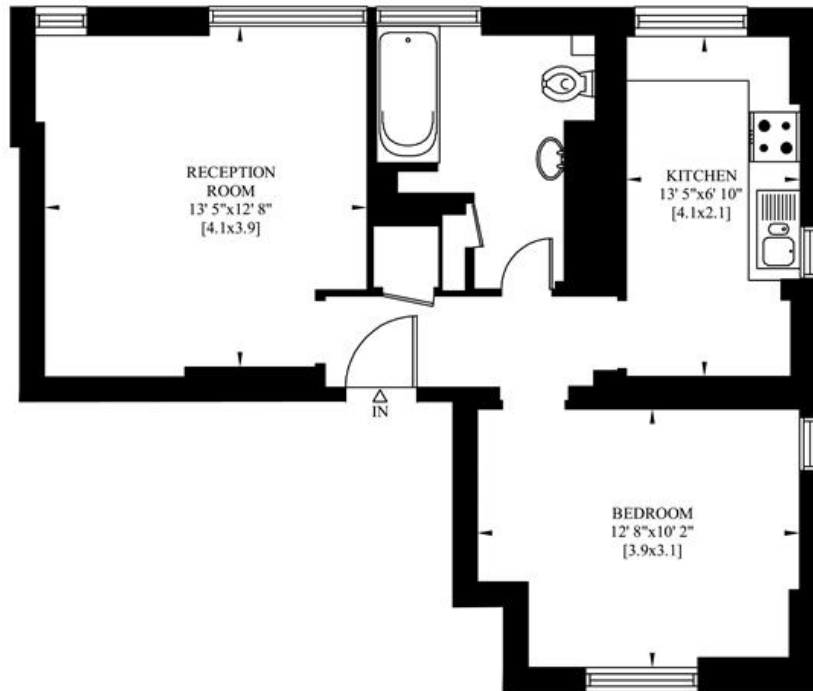
Ground Rent: £10 Per Annum

Leasehold: 125 years from 9/11/1981 (95 years remaining)

DISCLAIMER: In Accordance with the 1991 Property Misdescription Act, these details and photographs have been prepared for "Tuckerman Estate Agents." in good faith and as a general guide, not a statement of fact. We have not carried out a survey, appliances and specific fittings have not been tested. Measurements are approximate and should not be relied upon for fixtures and fittings.

ROSSETTI HOUSE
ERASMUS STREET
LONDON SW1

Gross Internal Area: 50 Sq. metres
541 Sq. feet



GROUND FLOOR